



WHAT the house will look like.

LVN15051 Rotary/charity/house01/102
PHOTO: SUPPLIED

REASON: This is why the charity house is being built! Students from Levin East School are learning with up-to-date technology in the classroom with a bit of help and support from Te Hinaki Education Trust. Next Wednesday the *Chronicle* will be running a story about the work the trust does to ensure Horowhenua children are supported in the classroom with up-to-date technology.

PHOTO: SUPPLIED

Levin Rotary is about to embark on a project to build a house and sell it to raise money for the Te Hinaki Education Trust.

The Club has conducted considerable background research on the project and obtained valuable input and comment from meeting with various individuals.

A small Project Group has assessed the practical and financial viability of the project and the Club has agreed to proceed.

The proposed transportable house will be erected on the vacant site at 156 Oxford Street (between the former National Bank Building and Novus Glass). The house has been designed to fit on a transporter, will be fully equipped and ready for occupation.

On completion and after marketing the house will be auctioned. The profit on the sale of the house will depend on the level of support the club can generate, plus the extent of buyer interest.

The plans and specifications and photos of the house are available for viewing.

The house site is highly visible, which gives supporters the chance to advertise their involvement and support for the project.

Those involved in building and supporting the charity house have an opportunity to be recognised and promote their product or service.

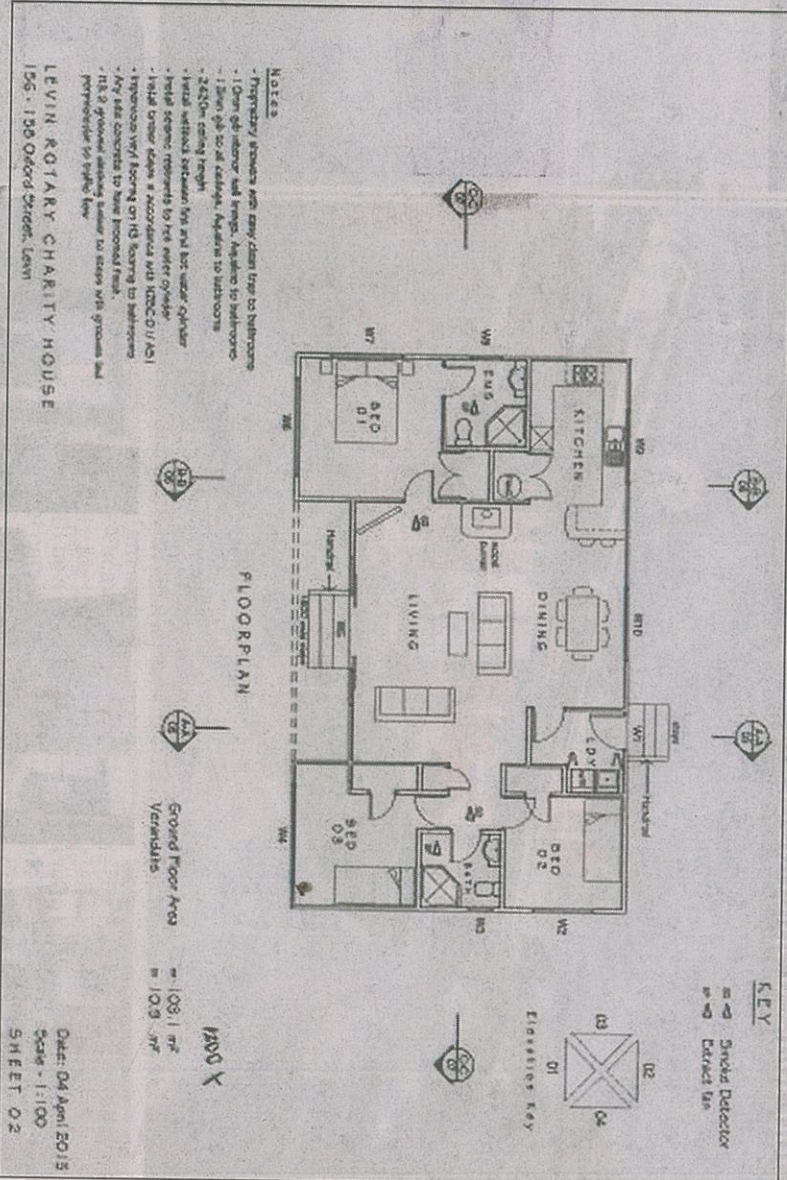
Rotary has contacted a number of people and businesses in the Horowhenua to seek agreement to become supporters.

In each case it has received enthusiastic support.

Building a house in the local community will provide the Club with a focus, demonstrate Rotary in action locally, as well as making a tidy profit on the sale.

The Club has partnered with the Te Hinaki Education Trust and proceeds from the Charity House sale will be passed over to Te Hinaki to support development of information technology in the Horowhenua community.

Te Hinaki has a goal to give every child and family equitable access to the digital environment, and Rotary fully supports this goal.



PLANS for the Levin Rotary House to be auctioned in support of Te Hinaki Education Trust, which supplies Chromebooks and tablets for school children.
 PHOTO: SUPPLIED

Horowhenua Chronicle

LOVE THIS PAPER, LOVE THIS PLACE

Established 1893

SUPPORTED BY

PHONE: (06) 368 5109